



ORDER FORM

INVOICING DETAILS

PERSONAL INFORMATION

Full Name

Contact number

Email Address

Delivery Address/ Locker
Location

Wedding Date

ORDER DETAILS

Expected date:

Payment Option

Deposit

Full

Dress style (please indicate all codes)

Fabric

Milano

Scuba Crepe

Scuba

Barbie

Fabric code

Any notes you'd like the studio to know

BRIDESMAIDS DETAILS

Please note each bridesmaid must complete her individual “bridesmaids details” form

PERSONAL INFORMATION

Name

Dress style

Fabric code (if different)

Changes or notes on dress

MEASUREMENTS

Shoulder to waist

Bust

Underbust

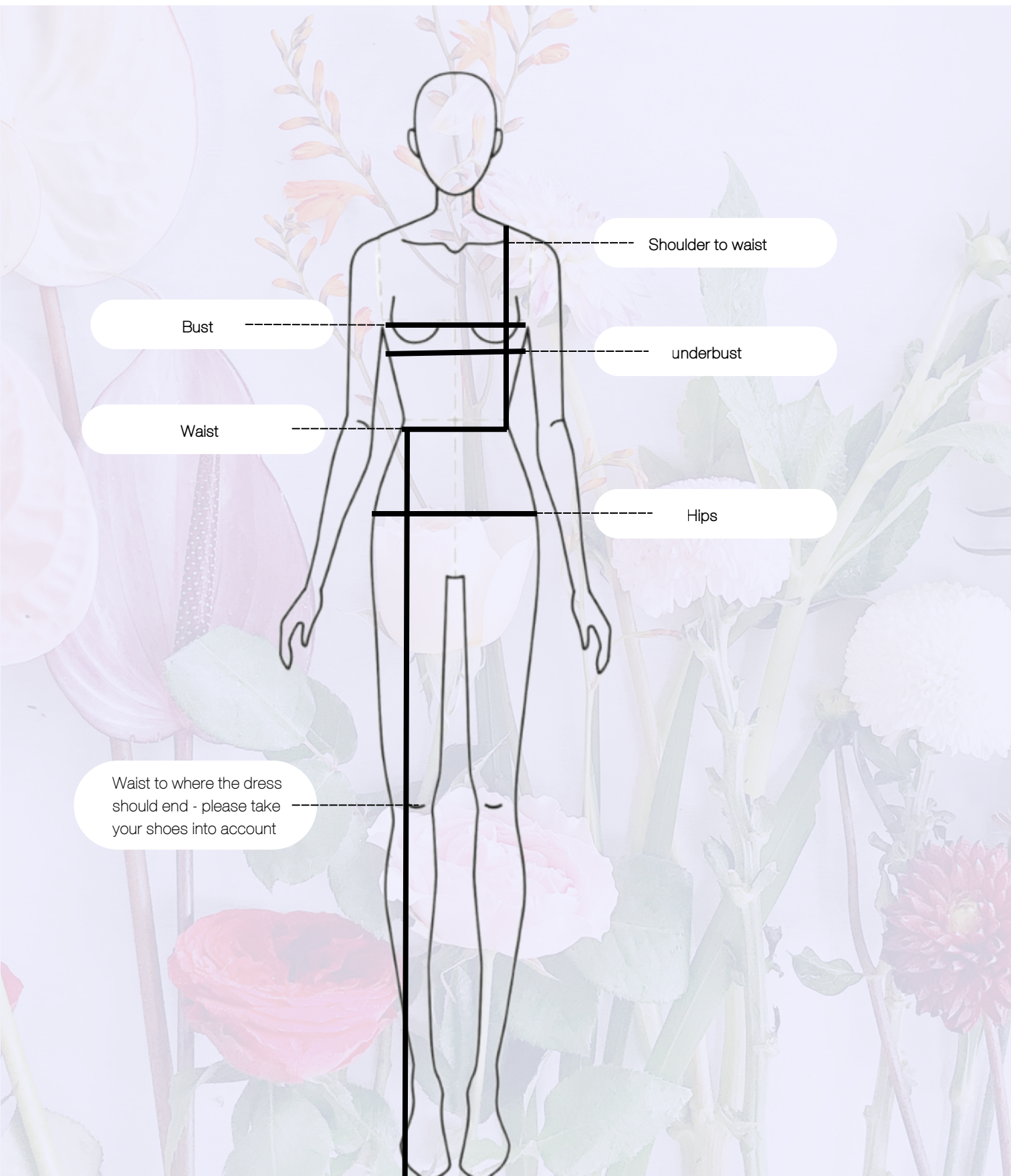
Waist

Waist to where the dress should end

Shoulder seam to wrist (only on long sleeve dresses)

WHERE TO MEASURE

Please contact us if you need any assistance



Bust

Shoulder to waist

underbust

Waist

Hips

Waist to where the dress should end - please take your shoes into account

HOW TO MEASURE

BUST AND UNDERBUST

To measure your bust, lift your arms and wrap the tape under your armpits straight across both nipples and around your back.

To measure your underbust, under your breasts and measure where your ribs begin.



WAIST

Where is my waist?

Rest your hand on your hips, then find the bottom of your ribs. Your waist is in between that area and where you should measure, this is usually the smallest part. Take a relaxed stance, don't pull in your tummy or hold your breath. Wrap the tape close around your waist but not too tight.



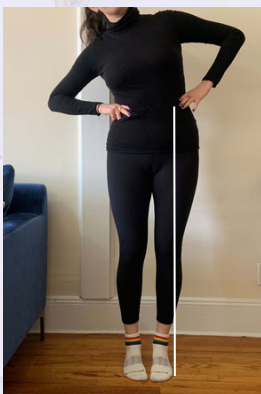
HIPS

Your hip measurement is across your bum at your widest point. For an accurate measurement, make sure your feet are straight below your hips and not sprawled apart



WAIST TO END

Measure from your previous waist point down to where you'd like your dress to end. Please take the height of your shoes into account.



SHOULDER TO WAIST

Measure from the top of your shoulder to your previous waist point.

